

Sax Tenore (Sib)

FOLLIE DI DONNA

Walzer

Durata circa 19'50"

Grado 4,5

Amilcare Ponchielli (1834 - 1886) Op. 122

Versione per banda sinfonica di Emiliano Gusperti

Andante moderato (♩ = 60)

1

pp

7

poco rall.

4

16-19

Detailed description: This system contains the first six measures of the piece. It begins with a treble clef, a key signature of one flat (B-flat), and a time signature of 6/8. A first ending bracket labeled '1' spans the first measure. The music starts with a piano (pp) dynamic. The notation includes eighth and sixteenth notes, rests, and a fermata over the eighth measure. The system ends with a repeat sign and a first ending bracket labeled '4' spanning measures 16-19.

Walzer n° 1 (♩ = 200)

20

pp

Detailed description: This system contains measures 20-25. It begins with a treble clef, a key signature of one flat, and a time signature of 3/4. The music starts with a piano (pp) dynamic. The notation includes eighth and sixteenth notes, rests, and a fermata over the first measure. The system ends with a repeat sign.

26

Detailed description: This system contains measures 26-31. It begins with a treble clef, a key signature of one flat, and a time signature of 3/4. The notation includes eighth and sixteenth notes, rests, and a fermata over the first measure. The system ends with a repeat sign.

32

Detailed description: This system contains measures 32-38. It begins with a treble clef, a key signature of one flat, and a time signature of 3/4. The notation includes eighth and sixteenth notes, rests, and a fermata over the first measure. The system ends with a repeat sign.

39

Detailed description: This system contains measures 39-45. It begins with a treble clef, a key signature of one flat, and a time signature of 3/4. The notation includes eighth and sixteenth notes, rests, and a fermata over the first measure. The system ends with a repeat sign.

46

mf

1. 2.

Detailed description: This system contains measures 46-53. It begins with a treble clef, a key signature of one flat, and a time signature of 3/4. The music starts with a mezzo-forte (mf) dynamic. The notation includes eighth and sixteenth notes, rests, and a fermata over the first measure. The system ends with a repeat sign and two first ending brackets labeled '1.' and '2.'.

54

mf

4

58-61

mf

Detailed description: This system contains measures 54-61. It begins with a treble clef, a key signature of one flat, and a time signature of 3/4. The music starts with a mezzo-forte (mf) dynamic. The notation includes eighth and sixteenth notes, rests, and a fermata over the first measure. The system ends with a repeat sign and a first ending bracket labeled '4' spanning measures 58-61.

66

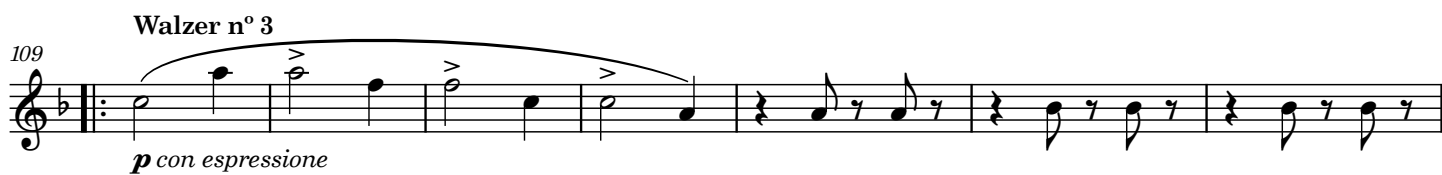
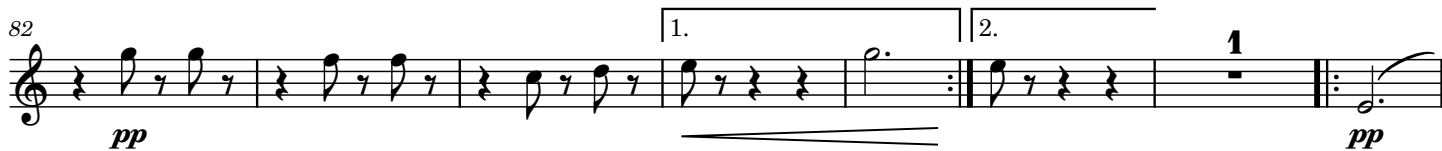
p

1. 2.

Walzer n° 2

f

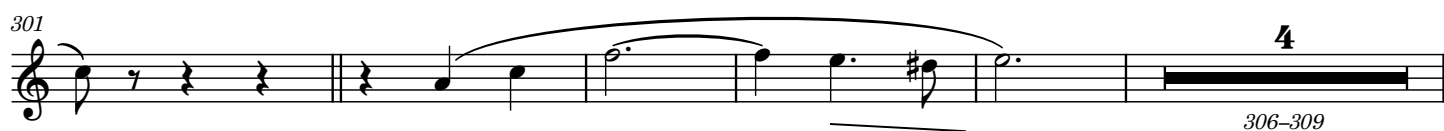
Detailed description: This system contains measures 66-73. It begins with a treble clef, a key signature of one flat, and a time signature of 3/4. The music starts with a piano (p) dynamic. The notation includes eighth and sixteenth notes, rests, and a fermata over the first measure. The system ends with a repeat sign and two first ending brackets labeled '1.' and '2.'. The piece concludes with a forte (f) dynamic.



Walzer n° 4

15





310

mf *p*

318 Valzer n° 2

f

327

pp

334

pp

345

p

354

pp cresc.

362

371 stringendo

ff

378

385